



Contents lists available at ScienceDirect

Clinical Microbiology and Infection

journal homepage: www.clinicalmicrobiologyandinfection.com

Original article

European all-cause excess and influenza-attributable mortality in the 2017/18 season: should the burden of influenza B be reconsidered?

J. Nielsen ^{1,*}, L.S. Vestergaard ¹, L. Richter ², D. Schmid ², N. Bustos ³, T. Asikainen ³, R. Trebbien ¹, G. Denissov ⁴, K. Innos ⁴, M.J. Virtanen ⁵, A. Fouillet ⁶, T. Lytras ⁷, K. Gkolfinopoulou ⁷, M. an der Heiden ⁸, L. Grabenhenrich ⁸, H. Uphoff ⁹, A. Paldy ¹⁰, J. Bobvos ¹¹, L. Domegan ¹², J. O'Donnell ¹², M. Scortichini ¹³, A. de Martino ¹⁴, J. Mossong ¹⁵, K. England ¹⁶, J. Melillo ¹⁷, L. van Asten ¹⁸, M. MA de Lange ¹⁸, R. Tønnessen ¹⁹, R.A. White ¹⁹, S.P. da Silva ²⁰, A.P. Rodrigues ²⁰, A. Larrauri ²¹, C. Mazagatos ²¹, A. Farah ²², A.D. Carnahan ²², C. Junker ²³, M. Sinnathamby ²⁴, R.G. Pebody ²⁴, N. Andrews ²⁴, A. Reynolds ²⁵, J. McMenamin ²⁵, C.S. Brown ²⁶, C. Adlhoch ²⁷, P. Penttinen ²⁷, K. Mølbak ^{1,28}, T.G. Krause ¹

¹ Statens Serum Institut, Copenhagen, Denmark

² Austrian Agency for Health and Food Safety, Vienna, Austria

³ Sciensano, Brussels, Belgium

⁴ National Institute for Health Development, Tallinn, Estonia

⁵ Finnish National Institute for Health and Welfare, Helsinki, Finland

⁶ French Public Health Agency (Santé Publique France), Saint-Maurice, France

⁷ Hellenic Centre for Disease Control and Prevention, Athens, Greece

⁸ Robert Koch Institute, Berlin, Germany

⁹ Hessisches Landesprüfungs- und Untersuchungsamt im Gesundheitswesen, Dillenburg, Germany

¹⁰ National Public Health Institute, Budapest, Hungary

¹¹ Ministry of Human Capacities, Budapest, Hungary

¹² Health Service Executive - Health Protection Surveillance Centre, Dublin, Ireland

¹³ Dipartimento Epidemiologia del S.S.R., Lazio - ASL Roma 1, Rome, Italy

¹⁴ Ministero della Salute, Rome, Italy

¹⁵ Laboratoire National de Santé, Luxembourg

¹⁶ Directorate for Health Information and Research, Pieta, Malta

¹⁷ Department of Health Regulation, Pieta, Malta

¹⁸ National Institute for Public Health and the Environment (RIVM), Bilthoven, the Netherlands

¹⁹ Norwegian Institute of Public Health, Oslo, Norway

²⁰ Instituto Nacional de Saúde Doutor Ricardo Jorge, Lisbon, Portugal

²¹ National Centre of Epidemiology, CIBER Epidemiología y Salud Pública (CIBERESP), Carlos III Health Institute, Madrid, Spain

²² Public Health Agency of Sweden, Stockholm, Sweden

²³ Federal Statistical Office, Neuchâtel, Switzerland

²⁴ Public Health England, Colindale, United Kingdom

²⁵ Health Protection Scotland, Glasgow, United Kingdom

²⁶ World Health Organization, Regional Office for Europe, Copenhagen, Denmark

²⁷ European Centre for Disease Prevention and Control, Solna, Sweden

²⁸ Department of Veterinary and Animal Science, Faculty of Health and Medical Science, University of Copenhagen, Copenhagen, Denmark

* Corresponding author: Jens Nielsen Infectious Disease Epidemiology and Prevention, Statens Serum Institute, Artillerivej 5, DK2300 Copenhagen, Denmark.
E-mail address: nls@ssi.dk (J. Nielsen).

<https://doi.org/10.1016/j.cmi.2019.02.011>

1198-743X/© 2019 The Authors. Published by Elsevier Ltd on behalf of European Society of Clinical Microbiology and Infectious Diseases. This is an open access article under the CC BY-NC-ND license (<http://creativecommons.org/licenses/by-nc-nd/4.0/>).

Please cite this article as: Nielsen J et al., European all-cause excess and influenza-attributable mortality in the 2017/18 season: should the burden of influenza B be reconsidered?, Clinical Microbiology and Infection, <https://doi.org/10.1016/j.cmi.2019.02.011>

ARTICLE INFO

Article history:

Received 20 December 2018

Received in revised form

5 February 2019

Accepted 10 February 2019

Available online xxx

Editor: L. Leibovici

Keywords:

B/Yamagata

EuroMOMO

FluMOMO

Influenza

Mortality

ABSTRACT

Objectives: Weekly monitoring of European all-cause excess mortality, the EuroMOMO network, observed high excess mortality during the influenza B/Yamagata dominated 2017/18 winter season, especially among elderly. We describe all-cause excess and influenza-attributable mortality during the season 2017/18 in Europe.

Methods: Based on weekly reporting of mortality from 24 European countries or sub-national regions, representing 60% of the European population excluding the Russian and Turkish parts of Europe, we estimated age stratified all-cause excess mortality using the EuroMOMO model. In addition, age stratified all-cause influenza-attributable mortality was estimated using the FluMOMO algorithm, incorporating influenza activity based on clinical and virological surveillance data, and adjusting for extreme temperatures.

Results: Excess mortality was mainly attributable to influenza activity from December 2017 to April 2018, but also due to exceptionally low temperatures in February–March 2018. The pattern and extent of mortality excess was similar to the previous A(H3N2) dominated seasons, 2014/15 and 2016/17. The 2017/18 overall all-cause influenza-attributable mortality was estimated to be 25.4 (95%CI 25.0–25.8) per 100,000 population; 118.2 (116.4–119.9) for persons aged 65. Extending to the European population this translates into over-all 152,000 deaths.

Conclusions: The high mortality among elderly was unexpected in an influenza B dominated season, which commonly are considered to cause mild illness, mainly among children. Even though A(H3N2) also circulated in the 2017/18 season and may have contributed to the excess mortality among the elderly, the common perception of influenza B only having a modest impact on excess mortality in the older population may need to be reconsidered. **J. Nielsen, *Clin Microbiol Infect* 2019;•1**

© 2019 The Authors. Published by Elsevier Ltd on behalf of European Society of Clinical Microbiology and Infectious Diseases. This is an open access article under the CC BY-NC-ND license (<http://creativecommons.org/licenses/by-nc-nd/4.0/>).

Introduction

Mortality in temperate countries, in particular among senior citizens, exhibits a marked seasonality, with higher mortality in the winter period. Excess mortality may vary considerably between countries and from season to season [1–7]. One of the main drivers of increased winter mortality is seasonal influenza, however seasonal transmission of other communicable diseases, such as RSV and enteric infections, as well as the effect of extreme ambient temperatures may also contribute [8,9].

Since 2009, the European network for monitoring of excess mortality for public health action, EuroMOMO (www.euromomo.eu), has monitored weekly all-cause, age-specific mortality in real-time in participating European countries and provided pooled estimates of excess mortality (observed minus expected), using the EuroMOMO model [10]. These estimates are published on a weekly basis and included in the weekly FluNewsEurope bulletin (www.FluNewsEurope.org) to assess the influenza situation in Europe. Recently, the EuroMOMO model was supplemented with another time-series regression model, FluMOMO, which includes indicators of influenza activity and extreme temperatures [7]. The aim of this model is to obtain timely estimates of influenza-attributable mortality adjusted for extreme temperatures.

From December 2017 a marked increase in all-cause excess mortality was observed within the participating countries, especially in western and southern European countries, and particularly among elderly (65 years or older). At the same time, most countries reported rates of Influenza Like Illness (ILI) reaching moderate levels, while only a few countries reported higher levels compared with recent seasons. However, in some countries number of influenza hospitalisations and intensive care admissions reached or exceeded peak levels of recent influenza seasons [11]. Overall, the dominant influenza type was B/Yamagata followed by influenza A, with both A(H1N1)pdm09 and A(H3N2) circulating in varying patterns between countries [12]. The WHO recommended vaccine components for the trivalent vaccine in the 2017/18 season on the Northern Hemisphere contained B/Victoria [13].

Knowledge about the burden of seasonal influenza is crucial to informing policies for prevention and control of influenza, in particular seasonal influenza vaccination programs. Hence, being able to quantify the mortality-burden of influenza, and associate it to circulating seasonal influenza viruses, adds valuable information.

The aim of the present study is to describe excess all-cause mortality and estimate all-cause mortality attributable to influenza during the season 2017/18 in Europe, using the EuroMOMO and FluMOMO models and available influenza surveillance and temperature data.

Methods

All-cause excess mortality, the EuroMOMO model

Countries participating in the EuroMOMO network collect data on number of all-cause deaths weekly, and undertake national analyses using the EuroMOMO model [4].

The EuroMOMO hub at Statens Serum Institut in Denmark receive mortality data aggregated by week and age group from the participating countries, and conducts country-stratified pooled analyses of these data [10]. We estimated the pooled excess mortality for the winter season 2017/18 using all-cause mortality data from week 1/2014 to week 20/2018, from 24 participating national or sub-nation states (Austria, Belgium, Berlin (Germany), Denmark, England (UK), Estonia, Finland, France, Greece, Hesse (Germany), Hungary, Ireland, Italy, Luxembourg, Malta, Netherlands, Northern Ireland (UK), Norway, Portugal, Scotland (UK), Spain, Sweden, Switzerland, Wales (UK)), further on referred to as countries.

Mortality data reported to the EuroMOMO hub in week 27/2018 were used.

Influenza-attributable mortality, the FluMOMO model

The FluMOMO model is a multiplicative Poisson regression time-series model with overdispersion, ISO-week as time unit and a post-estimation correction for skewness of the residuals by

applying a 2/3-power correction, and have been described in detail elsewhere [7].

To estimate influenza-attributable mortality for each country we used the all-cause mortality data from EuroMOMO, aggregated by week and age group, combined with weekly influenza activity (IA) and temperature data. As IA indicator, we used the Goldstein index [14], defined as the ILI rate multiplied by the Positive Percentage (PP), i.e. proportion of sentinel influenza-positive specimens among all sentinel specimens tested for influenza. This indicator combines the clinical measure of influenza circulating in the population (ILI) with PP to take into account that not all ILI cases are due to influenza. In countries or seasons, where ILI data were unavailable, Acute Respiratory Infection (ARI) rates or alternatively the indicator Intensity (Low, Medium, High or Very High; a qualitative measure, recommended to be based on the Moving Epidemic Method [15]) was used. ILI/ARI/Intensity data as well as virology data were downloaded from the TESSy database at the European Centre for Disease Prevention and Control (ECDC) [16,17]. Virological data registered in TESSy are not age differentiated, therefore the same all-ages virological data had to be used in each age group. Ambient daily temperature data from weather stations in each of the participating countries was captured from the National Oceanic and Atmospheric Administration (NOAA) [18]. Weekly extreme temperatures were defined as degrees of temperature above the expected weekly average maximum temperatures or below the weekly average minimum temperature [7].

We estimated the pooled mortality attributable to influenza and extreme temperatures for the winter seasons 2012/13 to 2017/18 using country-stratified pooled analyses, thus adjusting for

differences in baselines between countries. The analyses were conducted for each season using data from the five preceding seasons.

Clinical and virological influenza data were downloaded in week 27/2018, as was ambient temperatures.

Mortality rates, background populations

Based on the estimated number of deaths, mortality rates were calculated using national or sub-national population data as of January 1st every year, downloaded from EuroSTAT (<https://ec.europa.eu/eurostat/>) in week 27/2018, and linearly interpolated through the year.

Results

Overall, the European 2017/18 influenza season was dominated by influenza B (Fig. 1). The weekly influenza PP was nearly two times higher for influenza B than influenza A, however with some variation between the participating countries.

All-cause mortality for all ages exceeded threshold levels ($>+2$ z-scores) in all participating countries except in Greece. Excess mortality was first observed in Spain in week 46/2017 (Table 1), followed by Scotland in week 47; England, Northern Ireland, and Portugal in week 49; France, Ireland, and Italy in week 50; Norway, Switzerland, and Wales in week 51; Denmark in week 52; Austria and Netherlands in week 1/2018. Belgium and Hungary had two weeks periods around New Year. Mortality in France, Norway, and Switzerland returned to expected levels at the end of January and in

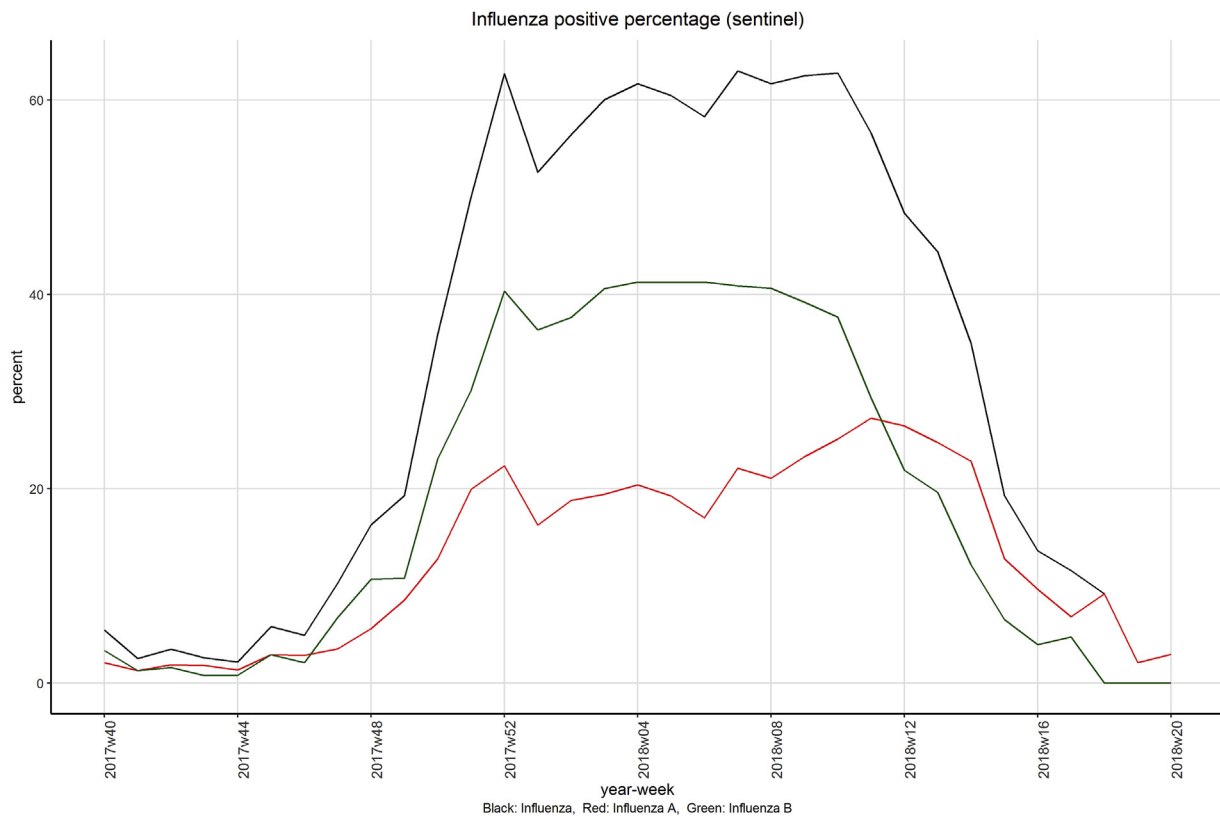


Fig. 1. Percentage influenza positive sentinel specimens, pooled from 24 European countries* by week of reporting and influenza virus type, week 40/2017 to week 20/2018. * Participating countries: Austria, Belgium, Berlin (Germany), Denmark, England (UK), Estonia, Finland, France, Greece, Hesse (Germany), Hungary, Ireland, Italy, Luxembourg, Malta, Netherlands, Northern Ireland (UK), Norway, Portugal, Scotland (UK), Spain, Sweden, Switzerland, Wales (UK)

Table 1
Weekly all-cause mortality for all ages exceeding the threshold level (+2 z-scores) during the 2017/18 winter season by country, based on the EuroMOMO algorithm

Year	2017														2018																													
	Week 40	41	42	43	44	45	46	47	48	49	50	51	52	1	2	3	4	5	6	7	8	9	10	11	12	13	14	15	16	17	18	19	20											
Country																																												
Austria	0	1	0	0	1	0	0	0	0	1	0	1	1	2	3	3	1	4	0	3	5	6	6	5	1	3	1	0	1	0	0	0	0	0	0	0	0	0	0					
Belgium	0	0	0	0	0	0	0	0	0	1	1	1	2	2	1	1	0	1	1	3	4	8	8	5	4	3	0	0	0	0	0	0	0	0	0	0	0	0	0	0				
Denmark	0	0	0	0	0	0	2	0	0	1	1	0	2	2	1	2	1	2	3	5	4	6	6	4	5	3	3	0	0	0	0	0	0	0	0	0	0	0	0	0	0			
England*	0	0	0	0	0	0	0	1	0	2	3	5	6	8	7	7	5	4	3	3	3	4	5	2	1	0	0	0	0	0	0	0	0	0	0	0	0	0	0	0	0			
Estonia	0	0	0	0	1	0	0	0	0	0	0	0	0	0	0	0	0	0	1	1	3	3	3	2	1	1	1	1	1	0	0	0	0	0	0	0	0	0	0	0	0			
Finland	0	0	0	0	0	0	0	0	0	0	0	0	0	0	0	0	0	0	0	0	0	0	0	2	1	2	2	1	3	0	0	0	0	0	0	0	0	0	0	0	0			
France	0	0	0	0	0	0	0	0	0	1	2	2	4	5	4	3	1	1	2	2	3	6	7	4	3	2	2	1	1	0	0	0	0	0	0	0	0	0	0	0	0	0		
Berlin ^b	0	1	0	0	0	0	0	0	0	0	0	0	0	0	0	0	0	0	0	1	3	3	5	4	3	2	1	1	0	0	0	0	0	0	0	0	0	0	0	0	0	0		
Hessen ^b	0	1	0	0	0	0	0	0	0	0	0	0	0	0	0	0	0	0	0	2	4	6	8	6	4	2	2	0	0	0	0	0	0	0	0	0	0	0	0	0	0	0		
Greece	0	0	0	0	0	0	0	0	0	0	1	0	1	1	0	0	1	1	0	0	1	1	0	0	1	1	0	0	0	0	0	0	0	0	0	0	0	0	0	0	0	0	0	
Hungary	0	0	0	0	0	0	0	0	0	0	1	4	2	0	0	0	0	0	1	2	3	4	4	3	2	1	0	0	0	0	0	0	0	0	0	0	0	0	0	0	0	0	0	
Ireland	0	0	0	1	0	0	1	0	0	0	2	1	4	5	5	2	3	1	1	0	2	2	0	0	0	0	0	0	0	0	0	0	0	0	0	0	0	0	0	0	0	0	0	
Italy	1	0	0	0	0	0	0	0	0	1	2	2	3	7	5	4	3	2	1	1	2	3	3	1	0	0	0	0	0	0	0	0	0	0	0	0	0	0	0	0	0	0	0	
Luxembourg	0	2	0	0	0	0	0	1	0	1	0	0	0	0	1	0	0	0	0	2	2	2	2	4	0	1	0	0	0	0	0	0	0	0	0	0	0	0	0	0	0	0	0	
Malta	0	0	0	0	1	0	1	0	0	1	1	1	2	4	1	2	1	1	2	3	4	2	2	1	1	0	1	1	0	0	0	0	0	0	0	0	0	0	0	0	1	0	0	
Netherlands	0	0	0	0	0	0	0	0	0	0	2	1	1	3	3	3	2	3	4	5	6	8	0	7	4	3	1	0	0	0	0	0	0	0	0	0	0	0	0	0	0	0	0	0
N. Ireland ^a	0	0	0	1	0	0	0	2	1	2	1	3	3	5	7	4	4	3	1	3	1	1	0	1	0	1	0	0	0	0	0	0	0	0	0	0	0	0	0	0	0	0	0	0
Norway	0	0	0	1	0	0	0	0	0	1	0	2	1	3	1	3	0	1	2	2	2	2	3	2	3	0	1	1	0	0	0	0	0	0	0	0	0	0	0	0	0	0	0	0
Portugal	1	0	1	0	0	0	2	1	1	4	4	4	6	7	7	6	5	5	6	6	6	5	2	2	1	2	3	2	1	0	0	0	0	0	0	0	0	0	0	0	0	0	0	0
Scotland	1	2	0	0	0	0	1	2	1	4	5	5	0	1	0	7	5	2	2	1	1	3	1	1	0	0	1	0	0	0	0	0	0	0	0	0	0	0	0	0	0	0	0	0
Spain	1	0	0	0	0	0	2	2	2	3	5	5	7	2	1	0	8	7	7	7	5	5	4	3	1	1	2	1	0	0	0	0	0	0	0	0	0	0	0	0	0	0	0	0
Sweden	1	1	0	0	0	0	0	0	0	0	0	0	0	1	0	0	0	0	1	1	3	4	5	3	2	2	3	0	0	0	0	0	0	0	0	0	0	0	0	0	0	0	0	0
Switzerland	1	0	0	0	0	0	0	0	2	1	1	2	1	4	4	3	1	1	2	3	3	6	5	4	2	1	1	1	0	0	0	0	0	0	0	0	0	0	0	0	0	0	0	0
Wales*	1	1	0	0	0	0	0	0	0	1	2	3	2	4	3	2	2	2	3	1	3	4	1	0	0	0	0	0	0	0	0	0	0	0	0	0	0	0	0	0	0	0	0	0

a) United Kingdom b) Germany
Values = z-score above 0. Red = above +2 z-scores. Yellow = weeks considered as above +2 z-scores i.e. included in periods with excess.

Scotland in February. For the other countries, the excess continued, and from February-March 2018 Belgium, Estonia, Finland, France, Hesse, Berlin, Luxembourg, Norway, Malta, and Sweden had mortality exceeding expected levels. Countries in the southwestern part of Europe and Scotland experienced particularly high all-cause excess mortality during the 2017/18 influenza season (high z-score value in Table 1).

The pooled estimates of excess all-cause mortality of the 24 participating countries rose sharply for the age groups 15-64 years and 65 years or older in week 48/2017, exceeding 4 z-scores above baseline in week 49/2017 (Fig. 2). Over the season, there were two waves of excess mortality, the first peak in the beginning of 2018 and a second less pronounced peak in February-March 2018.

Previously published pooled estimates of excess mortality according to the EuroMOMO algorithm for the 2012/13 to 2016/17 seasons [19] and the estimates for the 2017/18 season are shown in Table 2. The excess all-cause mortality rate, i.e. the deviation from the estimated baseline, for the 2017/18 season was 33.8 (95%CI 32.8-34.9) per 100,000 population across all ages, which approximated the high mortality rates observed in the two A(H3N2) dominated seasons 2014/15 and 2016/17 (Fig. 3). Mortality rates were highest among those aged 65 years and older, whereas the mortality rate among children <15 years was lower than the previous seasons.

According to the FluMOMO model, excess mortality in the 2017/18 season could largely be attributed to seasonal variation in influenza activity (Fig. 4). Furthermore, the FluMOMO model indicated that the second late peak in mortality to some extent could be attributed to the exceptionally cold temperatures in February-March 2018 in addition to a declining, but still prominent excess mortality attributable to influenza.

The pooled 2017/18 mortality attributable to influenza was estimated to be 25.4 (25.0-25.8) per 100,000 population for all ages, slightly below the 2014/15 and 2016/17 seasons (Table 2) but following the pattern of these seasons (Fig. 5). In the age group 15 to 64 years, the influenza-attributable mortality was estimated to

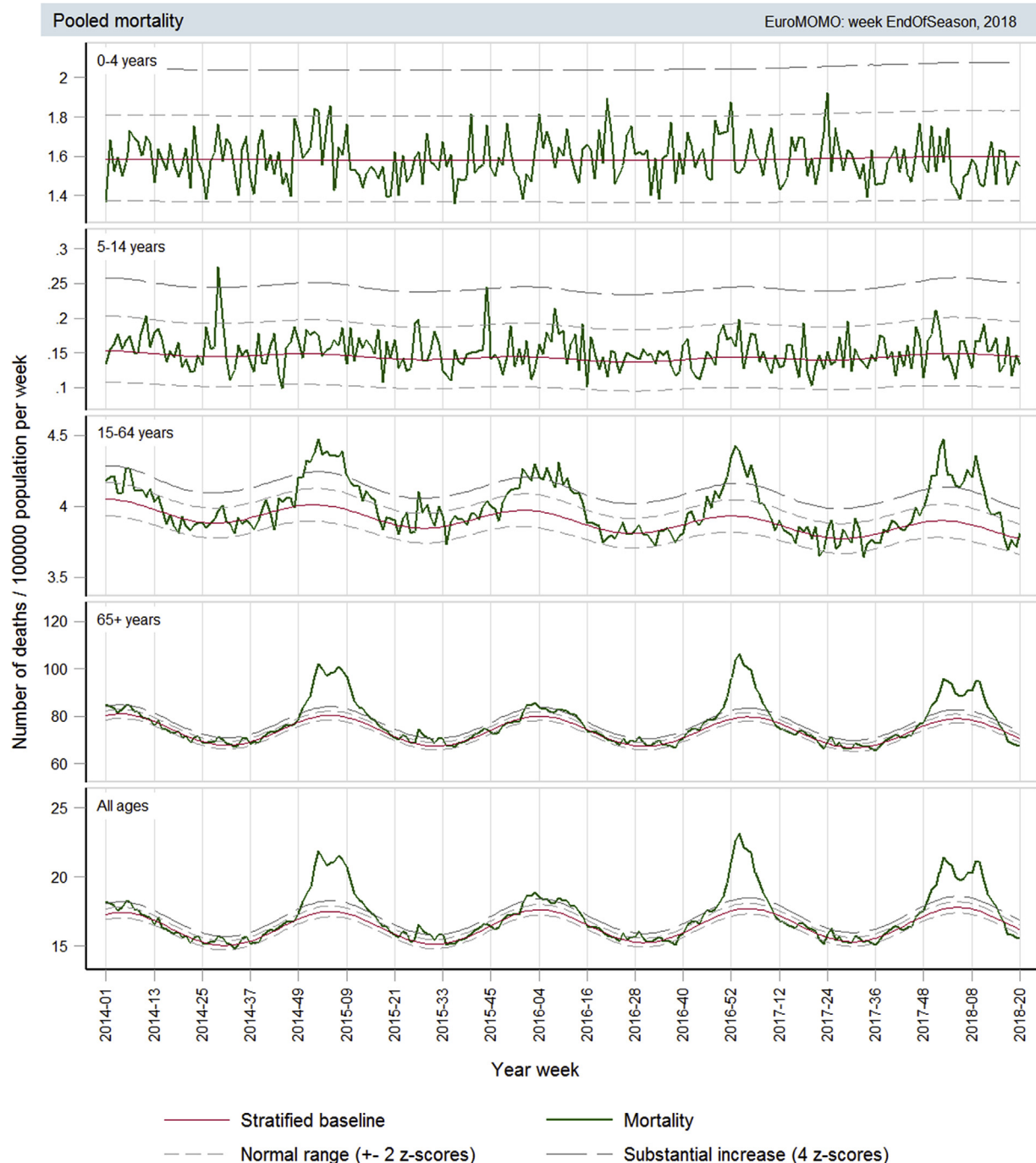
be 3.1 (3.1-3.2) per 100,000 population, which was significantly higher than the five previous seasons.

With the participation of 24 European countries corresponding to a population of 361 million inhabitants (Tables 2 and 3), the pooled analyses cover 60% (361/599) of the European population of 599 million, excluding the Russian and Turkish parts of Europe (<http://www.worldometers.info/world-population/europe-population/>). If we extend our results to this European population, excess number of deaths in Europe during the 2017/18 season would be 202 (196-209) thousand, and number of deaths attributable to influenza 152 (150-155) thousand.

Discussion

Seasonal influenza causes a major health burden [20], especially for the elderly and persons with underlying health conditions. In addition to the direct effects of influenza infection, underlying health conditions may be exacerbated leading to poor health outcomes and even premature death. In this situation, influenza or respiratory tract infection may not be registered as cause of death. Hence, estimates of influenza-attributable mortality based on all-cause rather than cause-specific mortality e.g. respiratory deaths including influenza and pneumonia, is expected to be higher. Influenza-attributable deaths coded as non-respiratory deaths have been found to be at the same magnitude as for respiratory influenza mortality [21,22]. Therefore, all-cause mortality attributable to influenza may be expected to be around the double of influenza mortality based on respiratory cause of death alone.

Recently, a global study estimated average annual influenza-associated respiratory mortality rates in Europe from 1999 to 2015 to be 3.1 to 8.0 per 100,000 population [23]. As expected, these estimates are lower than the median of the all-cause estimates of influenza-attributable mortality of 13.3 per 100,000 population (Table 3). However, considering, as mentioned, that influenza-associated deaths from respiratory deaths may represent

**Participating countries:**

Austria, Belgium, Denmark, Estonia, Finland, France, Germany (Berlin), Germany (Hesse), Greece, Hungary, Ireland, Italy, Luxembourg, Malta, Netherlands, Norway, Portugal, Spain, Sweden, Switzerland, UK (England), UK (Northern Ireland), UK (Scotland), UK (Wales)

Fig. 2. All-cause mortality pooled from 24 European countries based on the EuroMOMO algorithm, by age group, week 01/2014 to week 20/2018.

only half of all influenza-attributable deaths, corresponding to all-cause mortality rates of roughly 6 to 16, the estimated rates from the two studies are consistent.

The EuroMOMO pooled analyses showed that the 2017/18 seasonal excess mortality started on the Iberian Peninsula and spread across the southern and western parts of Europe, while mortality tended to be within normal levels in the northern, eastern, and

central parts of Europe until February–March 2018, where Europe experienced a period with exceptionally cold temperatures. The FluMOMO pooled estimates of mortality attributable to influenza activity adjusted for extreme temperatures showed a similar pattern, including a marked elevated mortality attributable to influenza among adults (15 to 64 years old). High numbers of hospital and ICU admissions were reported among elderly [11],

Table 2
Cumulated pooled all-cause excess mortality during the winter season based on the EuroMOMO algorithm, by season (week 40 to week 20) 2012/13 to 2017/18

Season	2012/13	2013/14	2014/15	2015/16	2016/17	2017/18
Circulating types of influenza ¹	A(H1N1)pdm09 (47%) B/Yamagata (53%)	Mixed A (98%) B/Yamagata (2%)	A(H3N2) (67%) B/Yamagata (33%)	A(H1N1)pdm09 (56%) B/Victoria (44%)	A(H3N2) (89%) Mixed B (11%)	Mixed A (33%) B/Yamagata (67%)
WHO recommended vaccine strains	A(H3N2) A(H1N1)pdm09 B/Yamagata	A(H3N2) A(H1N1)pdm09 B/Yamagata	A(H3N2) A(H1N1)pdm09 B/Yamagata	A(H3N2) A(H1N1)pdm09 B/Yamagata	A(H3N2) A(H1N1)pdm09 B/Victoria	A(H3N2) A(H1N1)pdm09 B/Victoria
Age groups	Excess all-cause mortality per 100,000 population (95% CI)					
0-4	1.14 (0.36;1.92)	1.76 (1.00;2.52)	1.38 (0.62;2.14)	2.42 1.70;3.14)	0.88 (0.15;1.60)	-1.07 (-1.72;-0.41)
5-14	0.49 (0.31;0.67)	0.18 (0.02;0.35)	0.51 (0.35;0.67)	0.50 (0.34;0.66)	0.18 (0.03;0.34)	0.13 (-0.01;0.27)
15-64	2.09 (1.66;2.53)	1.67 (1.22;2.12)	5.94 (5.53;6.35)	4.85 (4.47;5.23)	3.49 (3.13;3.86)	5.03 (4.71;5.35)
≥65	88.20 (81.42;94.99)	-12.46 (-20.11;-4.79)	214.17 (207.60;220.74)	14.71 (8.82;20.60)	152.79 (146.43;159.16)	154.12 (149.35;158.89)
Total	17.25 (15.96;18.55)	-1.39 (-2.96;0.18)	43.63 (42.30;44.96)	5.37 (4.15;6.58)	29.21 (27.97;30.45)	33.81 (32.76;34.85)
Number of countries participating	14	17	18	19	21	24
Population covered (millions)	268	275	279	340	345	361

Note: Excess mortality is defined as observed mortality minus baseline.

¹ For 2012/13 and 2013/14 all EU/EEA sentinel samples reported to ECDC (<https://ecdc.europa.eu/en/seasonal-influenza/surveillance-and-disease-data/aer>). From 2014/15 and onward, all European sentinel samples reported to WHO/ECDC (<http://flunewseurope.org/Archives>).

supporting increased disease impact especially among adults and elderly. In contrast, the influenza-attributable mortality among children <15 years of age was at the same level or lower than previous seasons.

During the 2017/18 season, influenza B/Yamagata circulated widely and dominated over mixed influenza A subtypes. Many European countries experienced a marked excess mortality among the elderly similar to that observed during the A(H3N2) dominated seasons 2014/15 and 2016/17. This observation challenges the common perception that influenza B has only a modest impact on severe illness and mortality in the elderly population [24,25]. Published data on burden of influenza B in Europe is scarce [26]. However, a global review found that influenza B can pose a significant burden [27]. A Canadian study reported that the age distribution differ between the two B lineages, with a substantially higher median age for B/Yamagata [28]. This may explain the pattern in mortality observed during the B/Yamagata dominated 2017/18 season. However, A(H3N2) circulated too, and may also have contributed to the excess mortality among elderly. It is also possible that the European population was more susceptible to B/Yamagata infection as B/Victoria has been the main circulating lineage since the 2014/15 season and before that 2012/13 [11]. Though B/Yamagata was included in the WHO recommended vaccines from 2012/13 to 2015/16, the immunity in the population may be limited due to low coverage, as influenza vaccination programmes in most European countries target only risk groups in order to minimise severe outcomes, and do not consider indirect protection and herd immunity. However, even though influenza B/Yamagata was not included in the 2017/18 season's trivalent influenza vaccine, which was most widely used in European countries, the vaccine effectiveness against influenza B has been estimated to 36-54% [29], maybe due to preserved immunity from previous immunisation (infection or vaccination) [30] or cross protection.

Limitations

Pooled estimates can both mask and accentuate differences between countries in excess and influenza-attributable mortality. Therefore, an important component in the EuroMOMO procedures is the initial national analyses to reveal excess mortality at country

level, while the pooled analyses may reveal small increases in mortality not immediately recognisable locally. For example, an excess mortality among adults aged 15-64 years was detected in the pooled analyses in the current season, but only in few of the countries' national analyses.

All analyses of influenza-attributable mortality were performed at the EuroMOMO hub, using IA data from TESSy. This has the advantage of using common, standardised IA data, but also has limitations e.g. missing a local review and validation process.

The Goldstein Index: ILI x PP, represents the most conservative indicator of influenza activity and was the IA indicator used in the FluMOMO model [7,14]. However, not all countries report ILI, and we used ARI or Intensity, where ILI was unavailable. Further, virology data from TESSy were not age-stratified; hence, the same all-ages-PP was used in each of the age groups, which may have masked differences between age groups. The impact of these limitations in IA should be investigated.

Mortality attributable to influenza differentiated by type/sub-type may provide an improved understanding of the burden attributable to each type/sub-type. However, the nearly equal pattern in the circulation of influenza A and B in the 2017/18 season (Fig. 1) introduced collinearity between the influenza types i.e. making the effects difficult to separate. Further, splitting the IA parameter into type/sub-type substantially reduced the statistical power making the model unstable. Therefore, it was not feasible to make type/sub-type differentiated estimates.

Heterogeneity in mortality patterns between countries may reflect some real differences, possibly related to differences in influenza circulation by type/sub-type, country-specific population susceptibility, differences in influenza vaccine uptake, varying from 5 to 75% coverage among elderly [31], or vaccine effectiveness. Therefore, regional analyses have the potential to provide added value. However, with few participating countries in some regions of Europe, this was not explored further.

We extended the estimated excess mortality in the participating countries to the European population, this extension is uncertain as potential differences in climate, influenza transmission, underlying immunity and access to health care between the participating and non-participating European countries were not taken into account.

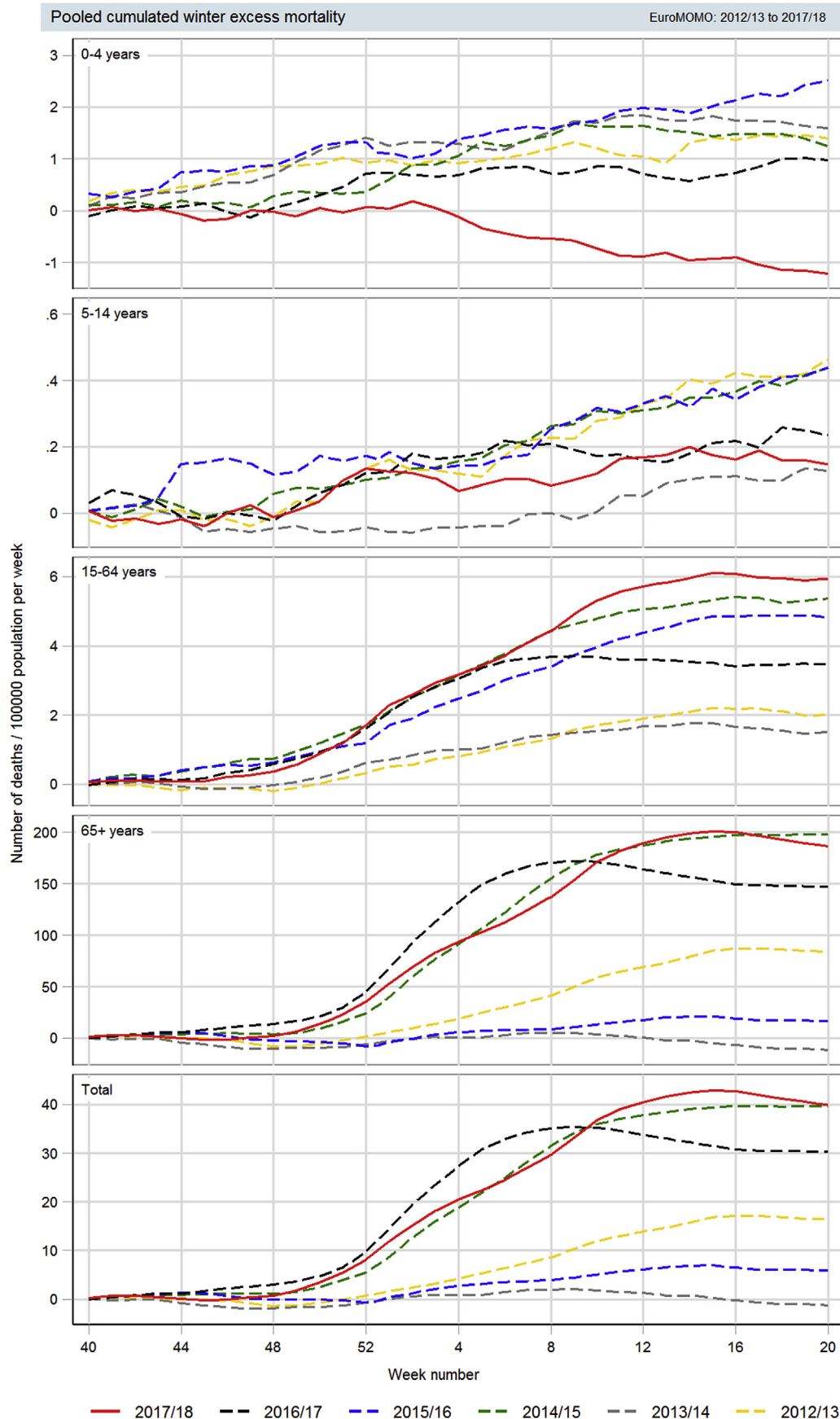


Fig. 3. Cumulated excess mortality pooled from 24 European countries based on the EuroMOMO algorithm, by age group and week, for the influenza seasons 2012/13 to 2017/18.

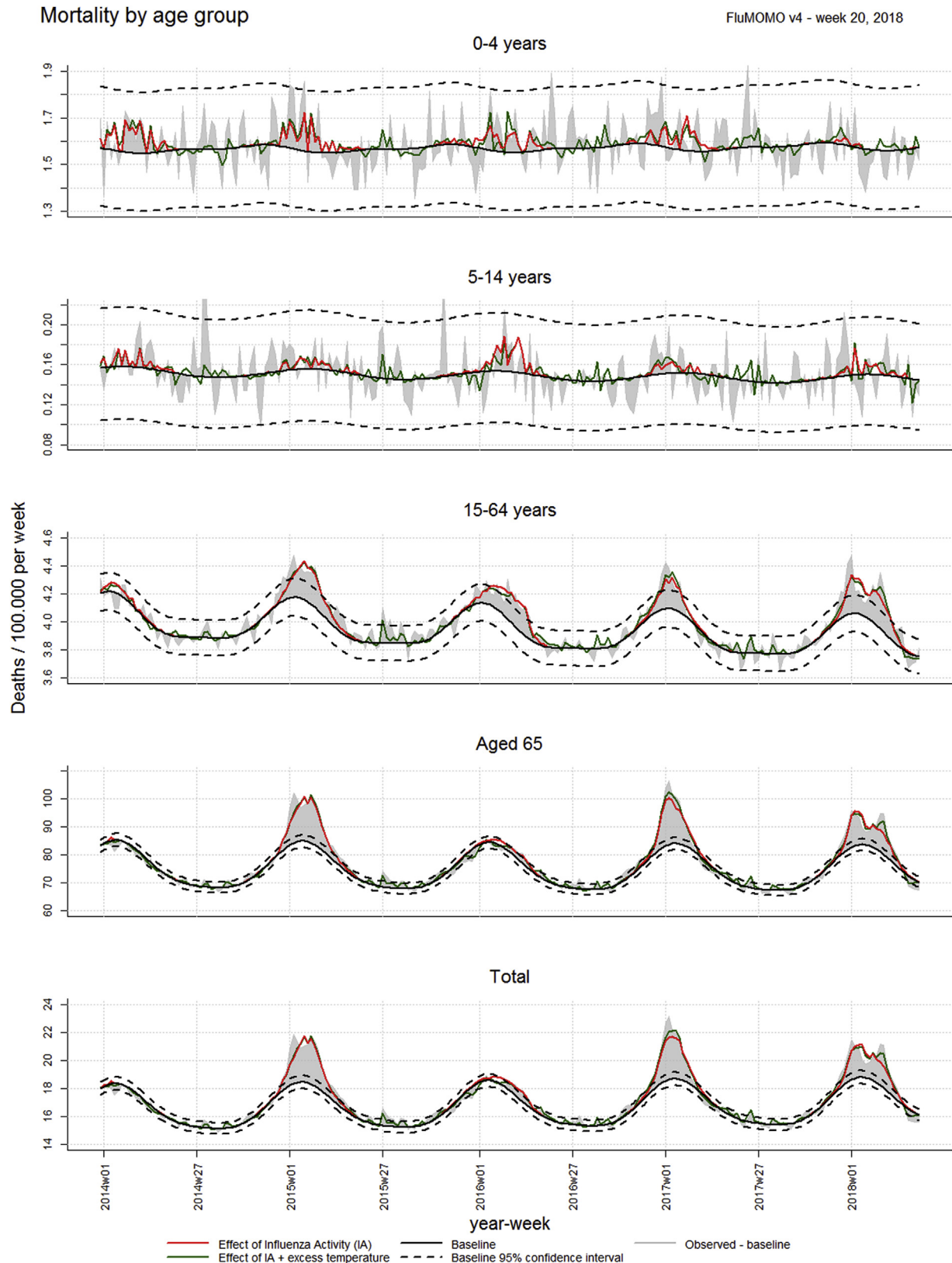


Fig. 4. All-cause mortality pooled from 24 European countries based on the FluMOMO algorithm, by age group, week 01/2014 to week 20/2018. Participating countries: Austria, Belgium, Berlin (Germany), Denmark, England (UK), Estonia, Finland, France, Greece, Hesse (Germany), Hungary, Ireland, Italy, Luxembourg, Malta, Netherlands, Northern Ireland (UK), Norway, Portugal, Scotland (UK), Spain, Sweden, Switzerland, Wales (UK)

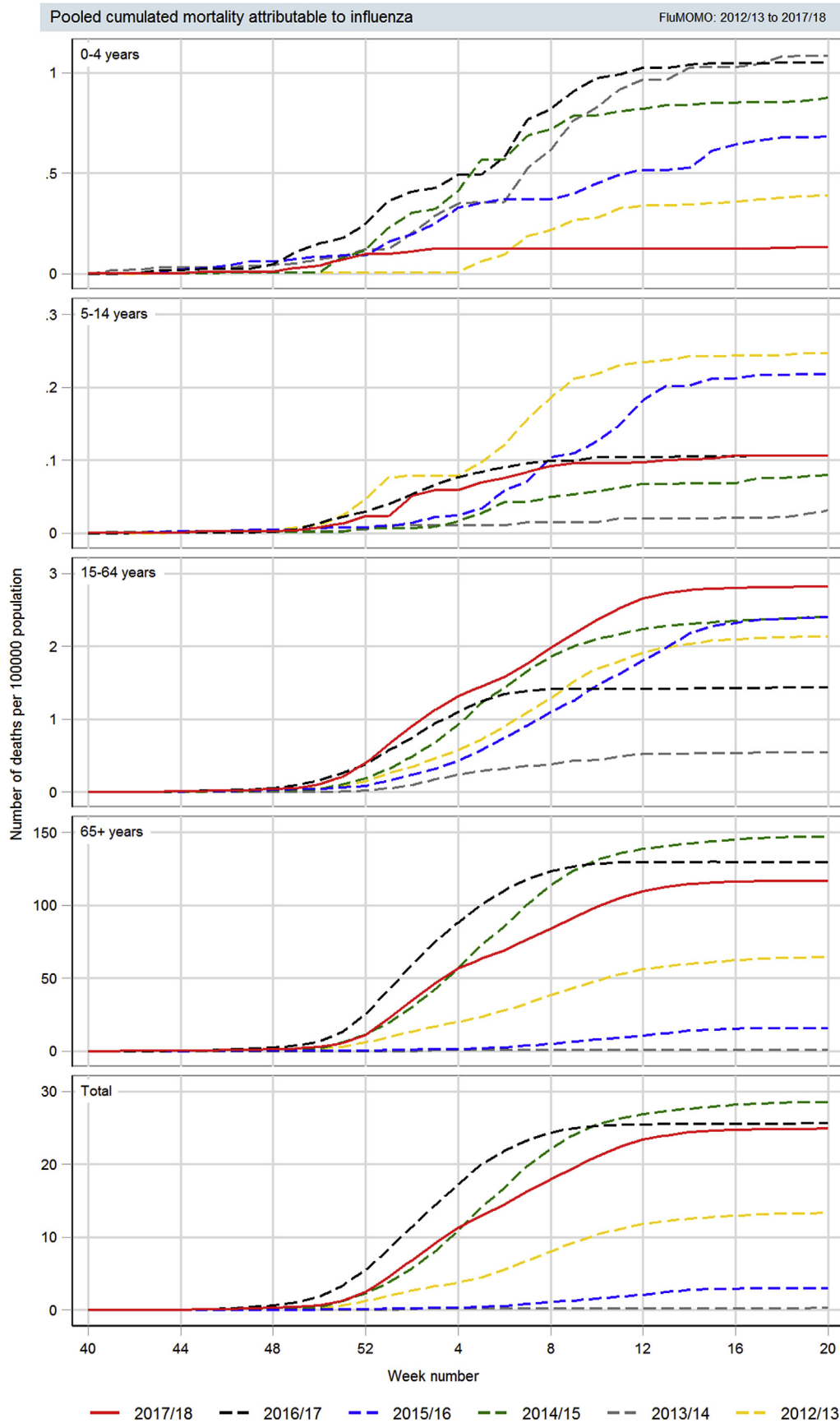


Fig. 5. Cumulated influenza attributable mortality pooled from 24 European countries based on the FluMOMO algorithm, by age group and week, for the influenza seasons 2012/13 to 2017/18.

Table 3
Cumulated pooled estimates of mortality attributable to influenza during the winter season based on the FluMOMO algorithm, by season (week 40 to week 20) 2012/13 to 2017/18

Season	2012/13	2013/14	2014/15	2015/16	2016/17	2017/18
Circulating types of influenza ¹	A(H1N1)pdm09 (47%) B/Yamagata (53%)	Mixed A (98%) B/Yamagata (2%)	A(H3N2) (67%) B/Yamagata (33%)	A(H1N1)pdm09 (56%) B/Victoria (44%)	A(H3N2) (89%) Mixed B (11%)	Mixed A (33%) B/Yamagata (67%)
WHO recommended vaccine strains	A(H3N2) A(H1N1)pdm09 B/Yamagata	A(H3N2) A(H1N1)pdm09 B/Yamagata	A(H3N2) A(H1N1)pdm09 B/Yamagata	A(H3N2) A(H1N1)pdm09 B/Yamagata	A(H3N2) A(H1N1)pdm09 B/Victoria	A(H3N2) A(H1N1)pdm09 B/Victoria
Age groups	Influenza-attributable mortality per 100,000 population (95% CI)					
0-4	0.39 (0.30-0.48)	1.09 (0.94-1.24)	0.88 (0.75-1.01)	0.69 (0.57-0.81)	1.05 (0.91-1.20)	0.14 (0.08-0.19)
5-14	0.25 (-0.03-0.82)	0.03 (0.01-0.05)	0.08 (-0.41-0.89)	0.22 (0.17-0.27)	0.11 (0.07-0.14)	0.11 (0.08-0.15)
15-64	2.14 (2.06-2.22)	0.55 (0.50-0.60)	2.41 (2.33-2.49)	2.40 (2.32-2.49)	1.43 (1.37-1.50)	3.14 (3.05-3.22)
≥65	64.46 (62.72-66.21)	0.61 (0.52-0.71)	147.41 (145.39-149.44)	15.95 (15.00-16.91)	129.90 (127.92-131.88)	118.17 (116.42-119.93)
Total	13.34 (13.02-13.66)	0.31 (0.24-0.38)	28.58 (28.22-28.95)	3.05 (2.87-3.23)	25.65 (25.26-26.05)	25.41 (25.03-25.80)
Number of countries participating	14	17	18	19	21	24
Population covered (millions)	268	275	279	340	345	361

¹ For 2012/13 and 2013/14 all EU/EEA sentinel samples reported to ECDC (<https://ecdc.europa.eu/en/seasonal-influenza/surveillance-and-disease-data/aer>). From 2014/15 and onward, all European sentinel samples reported to WHO/ECDC (<http://flunewseurope.org/Archives>).

Conclusion

Using the existing EuroMOMO and FluMOMO models and available influenza and temperature data, we have shown that during the 2017/18 season, dominated by influenza B/Yamagata, Europe experienced a marked excess mortality among adults and elderly attributable to influenza. The impact of the 2017/18 influenza epidemic on mortality was similar to that of the previous influenza A(H3N2) dominated seasons in 2014/15 and 2016/17. The European number of deaths attributable to influenza was estimated to be 152 thousand persons. We found a lower influenza-attributable mortality compared to excess mortality, which may indicate that other circulating pathogens might also have contributed to the all-cause excess mortality.

A non-negligible circulation of A(H3N2) may have contributed to the high excess mortality among elderly. However, the large influenza-attributable mortality burden in elderly during an influenza B dominated season challenge the common perception of influenza B primarily affecting children and young adults and having limited impact in the elderly population.

Finally, our findings suggest that the overall influenza-related mortality is significantly higher than influenza mortality based on respiratory causes of deaths alone. However, as data on mortality are crucial to informing policies pertaining prevention and control of influenza, in particular seasonal influenza vaccination programs, further studies are needed to fully assess the burden of all-cause and cause-specific influenza mortality.

Transparency declaration

The EuroMOMO network has received financial support from the European Centre for Disease Prevention and Control (ECDC), contract number ECDC/2016/041, but not specifically to this study. The corresponding author had full access to all data and had final responsibility for the decision to submit for publication.

All authors report no conflicts of interest relevant to this article.

Authors' contributions

Jens Nielsen drafted the manuscript and performed all analyses, graphs, and tables. Lasse S Vestergaard, Kåre Mølbak, and Tyra G Krause wrote parts of the manuscript. Authors from the participating countries provided data and contributed to drafting the manuscript. All authors reviewed and approved the final version.

Acknowledgements

We acknowledge all EuroMOMO partners for their contributions as well as the National Offices of Statistics, and the European Influenza Surveillance Network for contributing with influenza data to TESSy.

References

- Nielsen J, Mazick A, Glismann S, Mølbak K. Excess mortality related to seasonal influenza and extreme temperatures in Denmark, 1994-2010. *BMC Infect Dis* 2011;11:350.
- Nunes B, Viboud C, Machado A, Ringholz C, Rebelo-de-Andrada H, Nogueira P, et al. Excess mortality associated with influenza epidemics in Portugal, 1980 to 2004. *PLoS ONE* 2011;6:e20661.
- Hardelid P, Pebody R, Andrews N. Mortality caused by influenza and respiratory syncytial virus by age group in England and Wales 1999-2010. *Influenza Other Respir Virus*. 2013;7:35-45.
- Mazick A, Gergonne B, Nielsen J, Wuillaume F, Virtanen MJ, Fouillet A, et al. Excess mortality among the elderly in 12 European countries, February and March 2012. *Euro Surveill* 2012;17.
- Mølbak K, Espenhain L, Nielsen J, Tersago K, Bossuyt N, Denissov G, et al. Excess mortality among the elderly in European countries, December 2014 to February 2015. *Euro Surveill* 2015;20.
- Vestergaard LS, Nielsen J, Krause TG, Espenhain L, Tersago K, Bustos Sierra N, et al. Excess all-cause mortality and influenza-attributable mortality in Europe, December 2016 - February 2017. *Euro Surveill* 2017;22.
- Nielsen J, Krause TG, Mølbak K. Influenza associated mortality determined from all-cause mortality, Denmark 2010/11-2016/17: the FluMOMO model. *Influenza and Other Respiratory viruses*. 2018. <https://doi.org/10.1111/irv.12564> [Epub ahead of print].
- van Asten L, van den Wijngaard C, van Pelt W, van de Kassteel J, Meijer A, van der Hoek W, et al. Mortality attributable to 9 common infections: significant effect of influenza A, respiratory syncytial virus, influenza B, norovirus, and parainfluenza in elderly persons. *J Infect Dis* 2012;206:628-39.
- Ballester J, Rodo X, Robine JM, Herrmann FR. European seasonal mortality and influenza incidence due to winter temperature. *Nat Clim Change* 2016;6:927-30.
- Nielsen J, Mazick A, Andrews N, Detsis M, Fenech TM, Flores VM, et al. Pooling European all-cause mortality: methodology and findings for the seasons 2008/9 to 2010/11. *Epidemiol Infect* 2013;141:1996-2010.
- European Centre for Disease Prevention and Control; World Health Organization/Europe. Flu news Europe, season 2017/2018. <http://flunewseurope.org/Archives> [Season 2017-2018] (accessed 06/03/2019).
- Adlhoch C, Snacken R, Melidou A, Ionescu S, Penttinen P. European Influenza Surveillance Network. Dominant influenza A(H3N3) and B/Yamagata virus circulation in EU/EEA. 2016/17 and 2017/18 seasons, respectively. *Euro Surveill* 2018;23.
- World Health Organization. Recommended composition of influenza virus vaccines for use in the 2018-2019 northern hemisphere influenza season. 2018. Available at: http://www.who.int/influenza/vaccines/virus/recommendations/201802_recommendation.pdf?ua=1. [Accessed 6 March 2019].
- Goldstein E, Viboud C, Charu V, Lipsitch M. Improving the estimation of influenza-related mortality over seasonal baseline. *Epidemiology* 2012;23:829-38.

- [15] Vega T, Lozano JE, Meerhoff T, Snacken R, Beauté J, Jorgensen P, et al. Influenza surveillance in Europe: comparing intensity levels calculated using the moving epidemic method. *Influenza Other Respir Virus* 2015;9:234–46.
- [16] European Centre for Disease Prevention and Control. The European surveillance system (TESSy). Available at: <https://ecdc.europa.eu/en/publications-data/european-surveillance-system-tesy> (accessed 06/03/2019).
- [17] Snacken R, Brown C. New developments of influenza surveillance in Europe. *Euro Surveill* 2015;20.
- [18] NOAA. National Oceanic and Atmospheric Administration (ftp://ftp.ncdc.noaa.gov/pub/data/g sod/GSOD_DESC.txt, accessed 06/03/2019).
- [19] reportWinter season 2016/17 mortality summary report. <http://www.euromomo.eu/methods/publications.html> (accessed 06/03/2019).
- [20] Cassini A, Colzani E, Pini A, Mangen MJ, Plass D, McDonald SA, et al. Impact of infectious diseases on public health using incidence-based-disability-adjusted life years (DALY's): results from the Burden of Communicable Disease in Europe study, European Union and European Economic Area countries, 2009 to 2013. *EuroSurveillance* 2018;23.
- [21] Redlberger-Fritz M, Aberle JH, Popow-Kraupp T, Kundi M. Attributable deaths due to influenza: a comparative study of seasonal and pandemic influenza. *Eur J Epidemiol* 2012;27:567–75.
- [22] Muscatello DJ, Newall AT, Dwyer DE, Macintyre CR. Mortality attributable to seasonal and pandemic influenza, Australia, 2003 to 2009, using a novel time series smoothing approach. *PLoS One* 2014;8:e64734.
- [23] Iuliano AD, Roguski KM, Chang HH, Muscatello DJ, Palekar R, Tempia S, et al. Estimates of global seasonal influenza-associated respiratory mortality: a modelling study. *Lancet* 2018;391:1285–300.
- [24] Wilson JD, Braunwald E, Isselbacher KJ, Petersdorf RG, Martin JB, Fauci AS, et al. Harrison's principles of internal medicine 12th ed. (page 697). McGraw-Hill, Inc.
- [25] Nelsen KE, Williams CFM. Infectious disease epidemiology, theory and practice (page 583). 2nd ed.. Jones and Bartlett Publishers, Inc.
- [26] Tafalla M, Buijssen M, Geets R, Noordegraaf-Schouten MV. A comprehensive review of the epidemiology and disease burden of Influenza B in 9 European countries. *Hum Vaccines Immunotherapeutics* 2016;12:993–1002.
- [27] Glezen WP, Jordana K, Kuehn CM, Ryan KJ, Oxford J. The burden of Influenza B: a structured literature review. *Am J Public Health* 2013;103:e43–51.
- [28] Skowronski DM, Chambers C, De Serres G, Sabaiduc S, Winter AL, Dickinson JA, et al. Age-related differences in influenza B infections by lineage in a community-based sentinel system, 2010–2011 to 2015–2016, Canada. *J Infect Dis* 2017;216:697–708.
- [29] Rondy M, Kissling E, Emborg H-D, Gherasim A, Pebody R, Trebbien R, et al. Interim 2017/18 influenza seasonal vaccine effectiveness: combined results from five European studies. *Euro Surveill* 2018;23.
- [30] Frey S, Vesikari T, Szymczakiewicz-Multanowska A, Lattanzi M, Izu A, Groth N, et al. Clinical efficacy of cell-derived and egg-derived inactivated subunit influenza vaccines in healthy adults. *Clin Infect Dis* 2010;51:997–1004.
- [31] European Centre for Disease Prevention and Control, Seasonal influenza vaccination in Europe - Vaccination recommendations and coverage rates for eight influenza seasons (2007–2008 to 2014–2015). <https://ecdc.europa.eu/en/publications-data/seasonal-influenza-vaccination-europe-vaccination-recommendations-and-coverage-2007-2015> (accessed 06/03/2019).